



JeanNouvel**Design**



PRESS RELEASE 2019



**+**  
**CONTENTS**

1 THE STUDIO	4-5
2 DESIGN	6-11
3 INDUSTRIAL DESIGN	12-13
4 AJN/JND SYNERGY	14-17
5 INTERIOR DESIGN	18-23
6 ONE-OFF BESPOKE PIECES	24-25
7 SCENOGRAPHY	26-27

## 'I'M NOT A DESIGNER. I'M AN ARCHITECT WHO DOES DESIGN.

I'd say I was a design lover – 'lover' as in a person who loves, who has a taste for adventure and invention and loves objects, things. I prefer quite ordinary furniture. I started designing in the 1980s because I couldn't find furniture that was the right match for my buildings. The key word in my work is elementarity. I look for peculiarities and characteristics that are tied to simple functions, to the technologies and attitudes of the moment.

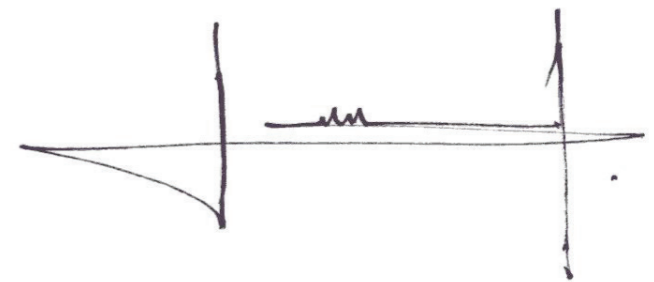
The elementarity I seek has nothing to do with minimalism or brutalism: elementarity involves ambiguity and complexity. The simpler an object looks, the more obvious or familiar, the harder it is to make, the more emotion it offers, and the better it stands the test of time.

Even when it goes in for a bare minimum of material and the most refined possible expression, design is no less creative.

It may well be more creative, this ambition to play on the material, on the absence of form. Standards are high, so high that the slightest mistake is inexcusable. This work is extremely pure, extremely long; to carry it off demands genuine pride. It's often a question of 'almost nothing'.

I like to say I do anti-design because I have no claim to a style: I take a different approach every time. If I create an object, it's because I believe in that object. For me, an object is a success if it feels familiar to me the moment it comes off the factory floor.

You should be asking yourself why you didn't think of it earlier.'



Open to all, the studio accommodates the Jean Nouvel Design team, as well as project managers from the Ateliers Jean Nouvel, furniture manufacturers, and clients.

### AN AGENCY AT THE SERVICE OF JEAN NOUVEL'S PROJECTS

A design studio, a platform for ideas, a forum for Jean Nouvel's projects.

The agency's remit is to work in close collaboration with the Ateliers Jean Nouvel throughout the development of furnishings and interior design solutions alongside the greatest makers of contemporary furniture.

### SAVOIR-FAIRE

Jean Nouvel Design's expertise covers furniture design, industrial design and the creation of unique bespoke pieces.

In the realm of interior design, the agency develops projects in housing, the hotel industry and retail spaces, as well as offices.

JND also creates scenography for events and cultural exhibitions.

## JeanNouvelDesign

### A MULTIDISCIPLINARY TEAM

The JND team is multidisciplinary and is composed of architects, interior designers, product designers and graphic designer.

#### PRESIDENT

Jean Nouvel

#### GENERAL MANAGER

Franck Argentin  
fargentin@jeannouvel.fr

#### DEPUTY DIRECTOR

Léo Chapuis  
lchapuis@jeannouvel.fr

#### ART DIRECTOR

Filippo Francescangeli  
ffrancescangeli@jeannouvel.fr

#### ADMINISTRATION AND FINANCE

Valentine Montéran  
vmonteran@jeannouvel.fr

#### PRODUCT DESIGN/INTERIOR DESIGN

Chiara Cappi  
Hadrien Dechaume  
Gaston Lobet  
David Mélan  
Nicolas Pericchi  
Hyojin Seong  
Clio Zancanella

#### GRAPHIC DESIGNER

Gabrielle Balsan



FRANCK ARGENTIN ET JEAN NOUVEL  
©THIERRY MALTZ





SUPER\_POSITION / MDF ITALIA

Jean Nouvel's œuvre follows the tradition of philosopher architects and designers who design whole worlds of all dimensions. An urbanist and an architect, Jean Nouvel is also a designer because he rejects labels.

**'I SEE NO DIFFERENCE BETWEEN WHEN I DESIGN A CHAIR AND WHEN I IMAGINE A BUILDING. I SEE EVERY PROJECT AS A COMPLETE DESIGN PROGRAM IN ITSELF. FOR EVERY CHALLENGE POSED, I SEEK THE 'ELEMENTARY' OBJECT WHOSE FINISHED FORM CORRESPONDS TO THE 'ESSENCE' OF AN IDEA. IT'S ALWAYS A FITTING AND UNIQUE SOLUTION THAT BEARS WITNESS, CULTURALLY AND TECHNICALLY, TO OUR TIMES AND TO OUR CIVILIZATION.'**  
JN



CRYPTÉE / GLAS ITALIA



JUMPER / VS

#### THE STORY BEGINS IN THE 1980S

The design work began in 1987 with VIA's 'Cartes Blanches' project before going on to become the focus of a completely separate body with the inception of Jean Nouvel Design in 1995.

#### A WIDE-RANGING COLLECTION BASED ON NEARLY 30 YEARS OF CREATION

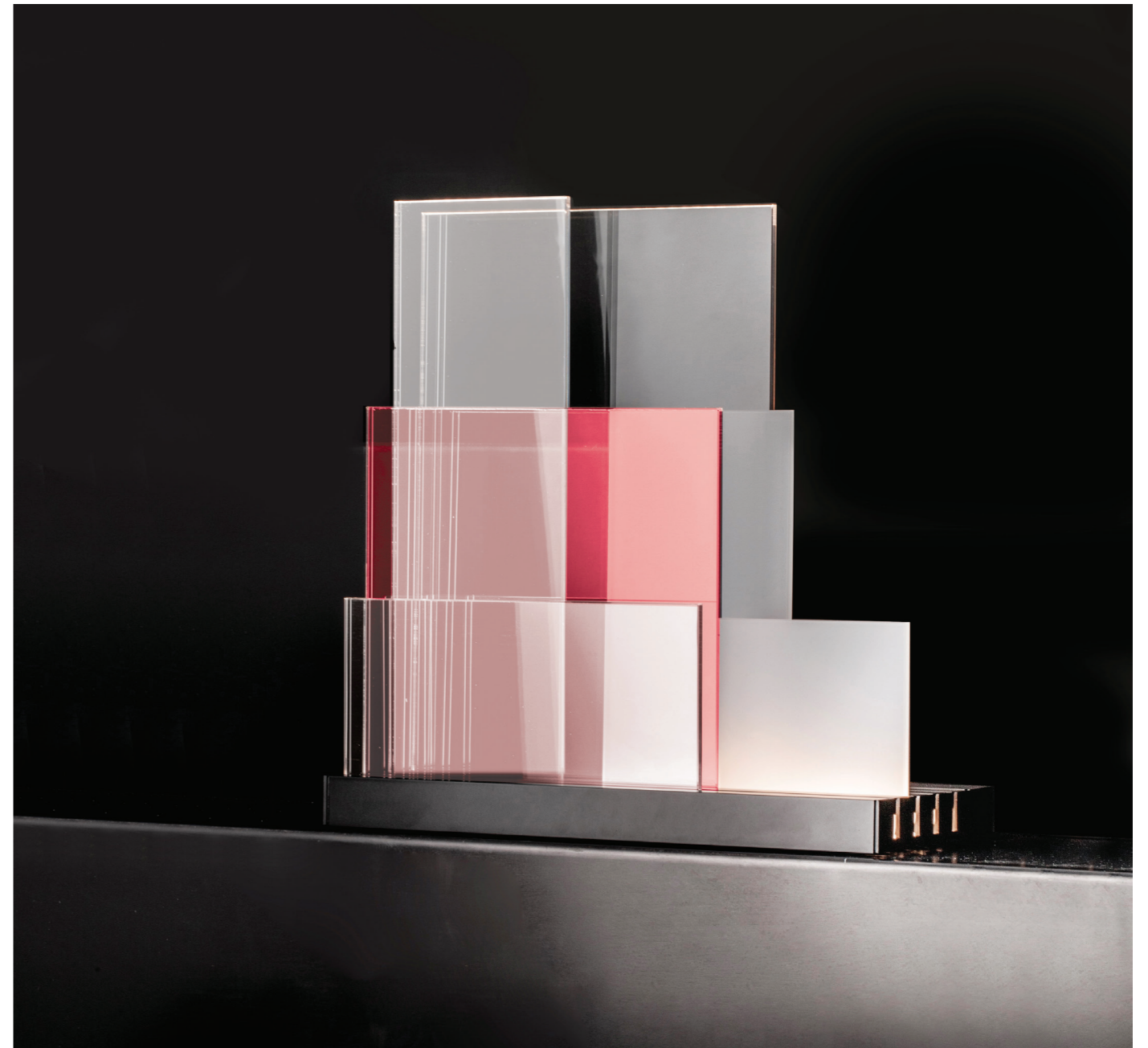
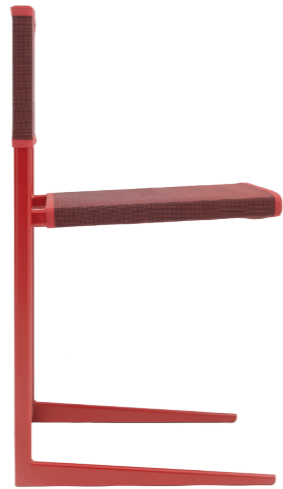
The first editions date from 1991 with the Profils sofa produced by Ligne Roset. Since then, Jean Nouvel Design has developed over a hundred pieces of furniture and objects of all kinds for over fifty French and international producers, and have been exposed for the first time at the Musée des Arts décoratifs.



LAD LINE / POLTRONA FRAU

**COLLABORATIONS GUIDED BY  
A DEMAND FOR QUALITY**

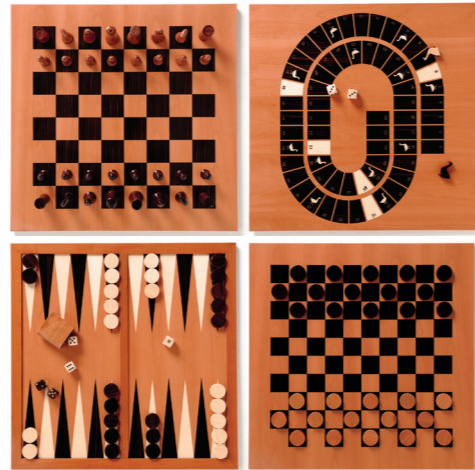
Notable collaborations have involved Unifor, Artemide, Cassina, Poltrona Frau, Alessi, Molteni, Emu, Olivari, Georg Jensen, Moroso, Sawaya & Moroni, Figueras, Emeco, Habitat, Kvadrat, Glas Italia, Troll, Danese Milano, MDF Italia, Nemo, Bottega Ghianda, Tecno, VS Moebel, CCM Italy, Matteo Grassi.



ON LINES / NEMO



ENIGME-À-TICS / BOTTEGA GHIANDA



ELEMENTAIRES / UNIFOR



### AN AMBITION

Within the remit of his architecture projects and his product lines, Jean Nouvel develops collaborations with the world's greatest producers of contemporary furniture in order to provide appropriate solutions in all domains.

« I LIKE TO SAY I DO ANTI-DESIGN BECAUSE I HAVE NO CLAIM TO A STYLE »

SCALO / CCM - MATTEO GRASSI



LOUNGE SYSTEM / CCM - MATTEO GRASSI



GRAND ECART / PALLUCCO

Jean Nouvel has developed whole ranges of flooring, wall dressings, and lighting solutions for industrial manufacturers, as well as office partitions, bathroom ranges, kitchen ranges, and a series of door handles, auditorium and airport seats.

JND is working with the manufacturing industry to develop applications for architecture and will be a creative force in materials research innovation, the focus being always on timeless aesthetics and functionality.



A - JN 18 / CCM - MATTEO GRASSI



PARALUM / TROLL  
© LIDA GUAN



PHILHARMONIA / AMADEUS



BOLON BY JEAN NOUVEL / BOLON

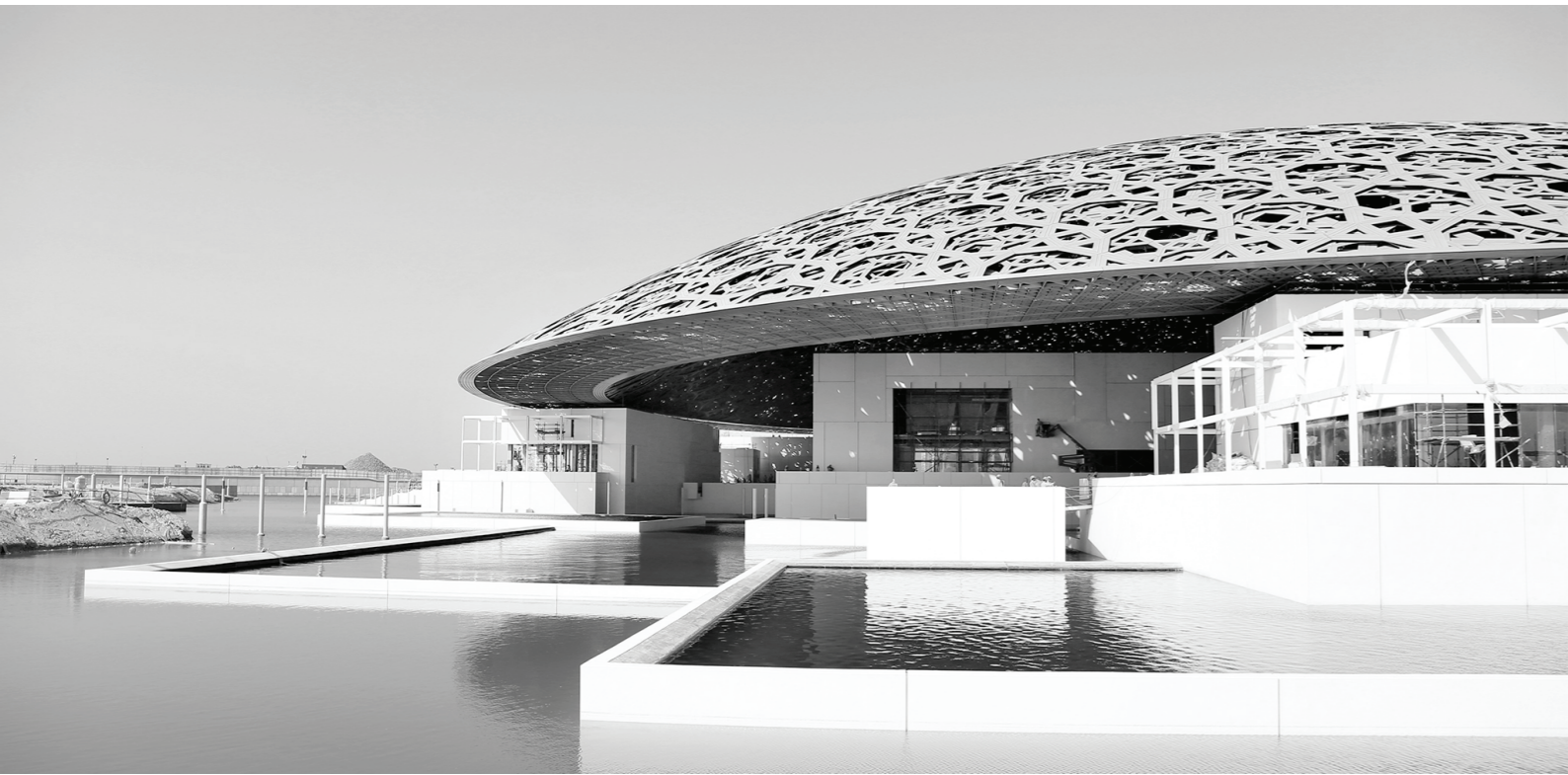


TRANSCRIPT / DECAEUX



IKONS / D LINES

'FOR ME, CREATING FURNITURE IS DIRECTLY RELATED TO THE ESSENCE OF THINGS, THE SAME AS IN ARCHITECTURE.' JN



THE ABU DHABI LOUVRE  
©COURTESY OF TDIC, ARCHITECT : ATELIERS JEAN NOUVEL

### HISTORICAL TIES WITH THE ARCHITECTURE AGENCY

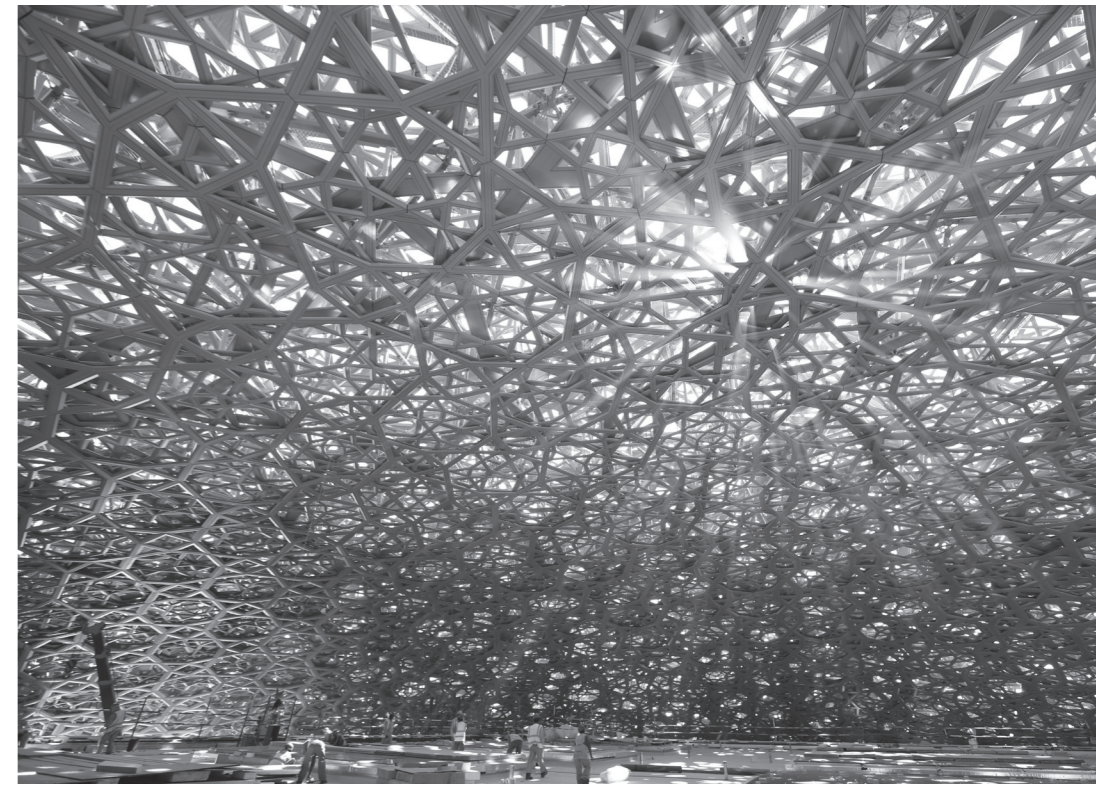
Jean Nouvel's design work expanded in the 1990s and several collections were developed in direct conjunction with his architectural creations.

### NUMEROUS FINISHED PROJECTS

Notable projects include the Saint James product line for the Hotel Saint James in Bouliac (Ligne Roset), the Elementaires armchair for the Conference Centre in Tours (Arflex), the Lyon armchair for the Lyon Opera House (Figueras), the Less Less range for the Cartier Foundation in Paris (Unifor), the Vienna sofa for the Hotel Sofitel Vienna (Wittmann) and, most recently, the seat for the Philharmonie de Paris (Figueras).



CLOSE / POLTRONA FRAU



THE ABU DHABI LOUVRE, FEBRUARY 2016  
©COURTESY OF TDIC, ARCHITECT : ATELIERS JEAN NOUVEL



>14 RHINOCEROS - FONDAZIONE ALDA FENDI ESPERIMENTI  
©ROLAND HAIBE



FLYING SURFACE / TROLL



RHINOCEROS - FONDAZIONE ALDA FENDI ESPERIMENTI



« I SEE NO DIFFERENCE BETWEEN WHEN I DESIGN A CHAIR AND  
WHEN I IMAGINE A BUILDING » JN

RENEWED AMBITION

With a wealth of experience in production and design projects acquired over close to 30 years at RBC, Franck Argentin is now the head of Jean Nouvel Design. His aim is to strengthen the tie between architecture and design.

Products developed with manufacturers specifically for Jean Nouvel's architecture projects will go on to be manufactured for retail distribution.



EPO / RIJSWIJK, PAYS-BAS, 2018  
©OSSIP VAN DUIVENBODE FOR EPO



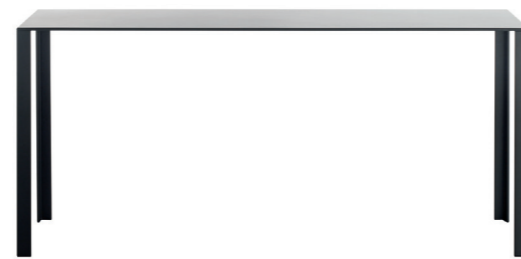
ELEMENTAIRES / UNIFOR



TOUR HORIZONS / BOULOGNE, 2011  
©AJN BOULOGNE HORIZONS ©VINCENT FILLON



FONDATION CARTIER / PARIS  
©AJN - PICTURE PHILIPPE RUAULT



LESS LESS / UNIFOR  
©MARIO CARRIERI



FONDATION CARTIER / PARIS  
©AJN - PICTURE PHILIPPE RUAULT



# 05 INTERIOR DESIGN

## THE PURSUIT OF EXCELLENCE

The projects led by Jean Nouvel aim to provide distinctive and poetic solutions. Great attention is paid to the details, materials and lighting, in complete respect for the clients' express requirements.

The expertise of Jean Nouvel Design allows us to develop such projects, from the design of interior spaces right down to the creation of custom furniture, accessories and one-off pieces.



RHINOCEROS - FONDAZIONE ALDA FENDI  
ESPERIMENTI - PICTURE : LIDA GUAN

## THE HOTEL INDUSTRY



RHINOCEROS - FONDAZIONE ALDA FENDI  
ESPERIMENTI - PICTURE : GIONATA XERRA



RHINOCEROS - FONDAZIONE ALDA FENDI  
ESPERIMENTI - PICTURE : LIDA GUAN



RHINOCEROS - FONDAZIONE ALDA FENDI  
ESPERIMENTI - PICTURE : GIONATA XERRA



RHINOCEROS - FONDAZIONE ALDA FENDI  
ESPERIMENTI - PICTURE : GIONATA XERRA



CHATEAU LA DOMINIQUE / SAINT EMILION  
©AJN AIR ARCHITECTES - LA TERRASSE ROUGE ©HERVE LEFEVRE



UFFICIO DA ABITARE  
©ROLAND HALBE

RESTAURANTS



RESTAURANT SAINT JAMES / BOULIAC  
©AJN - PHOTOS : STEPHANE COUTURIER  
>20



RHINOCEROS - FONDAZIONE ALDA FENDI ESPERIMENTI  
©GIONATA XERRA



DESIGN LAB / HYUNDAI CARD  
©HYUNDAI CARD

OFFICES



UFFICIO DA ABITARE / MILAN  
©ANDREA MARIANI



PROJET PRIVÉ / FRANCE  
©JEAN NOUVEL DESIGN



SHOWROOM VS / CHICAGO  
©VS

HOUSING



UFFICIO DA ABITARE  
©ANDREA MARIANI  
>22



PROJET PRIVÉ / FRANCE  
©JEAN NOUVEL DESIGN



H&M FLAGSHIP STORE / PARIS  
©NIELS STOLTENBORG



MG8 / SAINT JEAN DE LUZ  
©PHILIPPE RUALT



## 06 ONE-OFF PIECES

### ONE-OFF PIECES ON DEMAND

Within his projects or on demand, Jean Nouvel creates exclusive pieces of furniture.

### GALLERIES

In 2011, Jean Nouvel entered into an exclusive collaboration with the Gagosian and Patrick Seguin galleries centred around numbered, limited-edition pieces.

**'THE KEY WORD IN MY WORK IS ELEMENTARITY. I LOOK MORE FOR PECULIARITIES AND CHARACTERISTICS THAT ARE TIED TO SIMPLE FUNCTIONS. I'M PARTICULARLY FOND OF TABLES, BECAUSE A TABLE IS A SIMPLE THING, BUT BEING SIMPLE DOESN'T MEAN IT'S EASY TO MAKE...'** JN



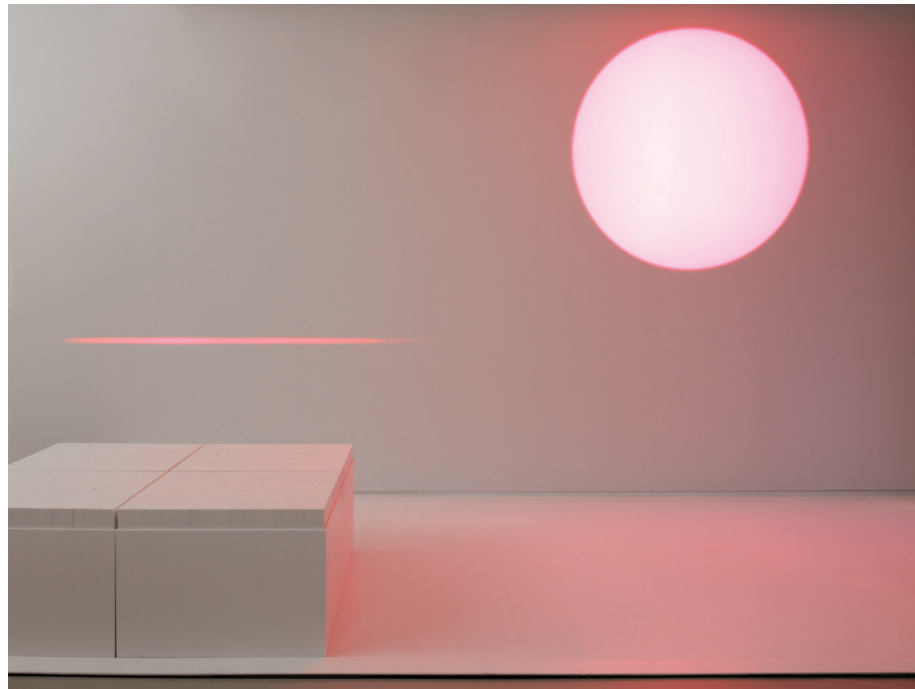
TABLE AU KM / GAGOSIAN GALLERY & GALERIE PATRICK SEGUIN  
©THIERRY DEPAGNE



BOITE À OUTILS / GAGOSIAN GALLERY & GALERIE PATRICK SEGUIN  
©THOMAS LANNES



TRIPTYQUES / GAGOSIAN GALLERY & GALERIE PATRICK SEGUIN  
©THOMAS LANNES



DUPONT CORIAN - COSMIT / MILAN

The scenography work was introduced as far back as 1990 with the designing of the INOX truck.

Jean Nouvel Design creates scenography for commercial and cultural events.

Among the leading events we've choreographed we might mention the Dupont Corian installation at the Milan Furniture Fair of 2007, the D&G 'Extreme Beauty' exhibition in Milan in 2009, the Bolon stand at the Stockholm Furniture Fair of 2012, the 'Progetto : ufficio da Abitare' installation at the Milan Furniture Fair of 2013 and the 2016 Lascaux International Exhibition in Korea.



JEAN NOUVEL, SENS ET ESSENCE, MES MEUBLES D'ARCHITECTE / MUSÉE DES ARTS DÉCORATIFS  
©LUC BOEGLY

## CULTURAL



CCM / MATTEO GRASSI - STAND PASSENGER TERMINAL EXPO 2019 - LONDRES  
>26



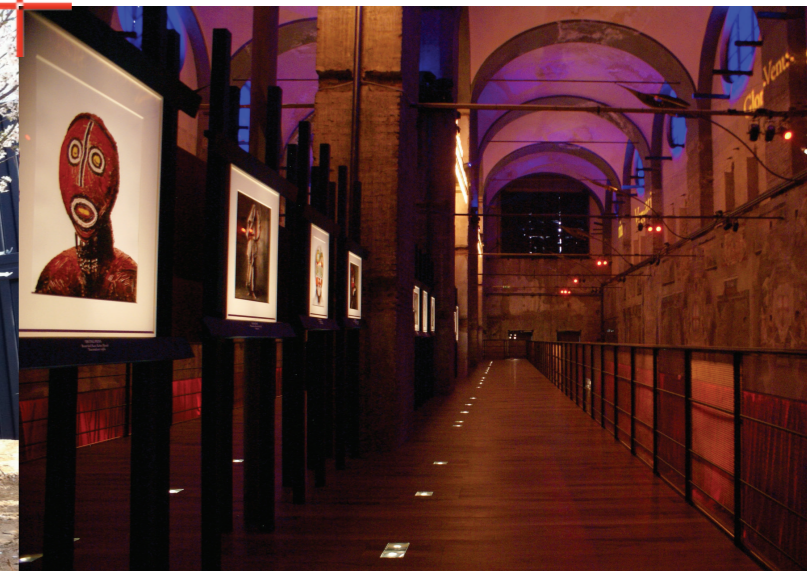
EXPOSITION SUPER\_POSITION, HYMNE À LA LÉGÈRETÉ DE L'HORIZONTALITÉ - RBC PARIS  
©MARINA GUSINA

## COMMERCIAL



LASCAUX, L'EXPOSITION INTERNATIONALE / GWANGMYEONG - CORÉE DU SUD  
©JEAN NOUVEL DESIGN

## EVENTS



EXTREME BEAUTY IN VOGUE / MILAN  
©RUY TEIXEIRA

